

FINAL RESULTS FROM EASTERN ZONE DRILLING CAMPAIGN AT THE SVARTLIDEN GOLD MINE

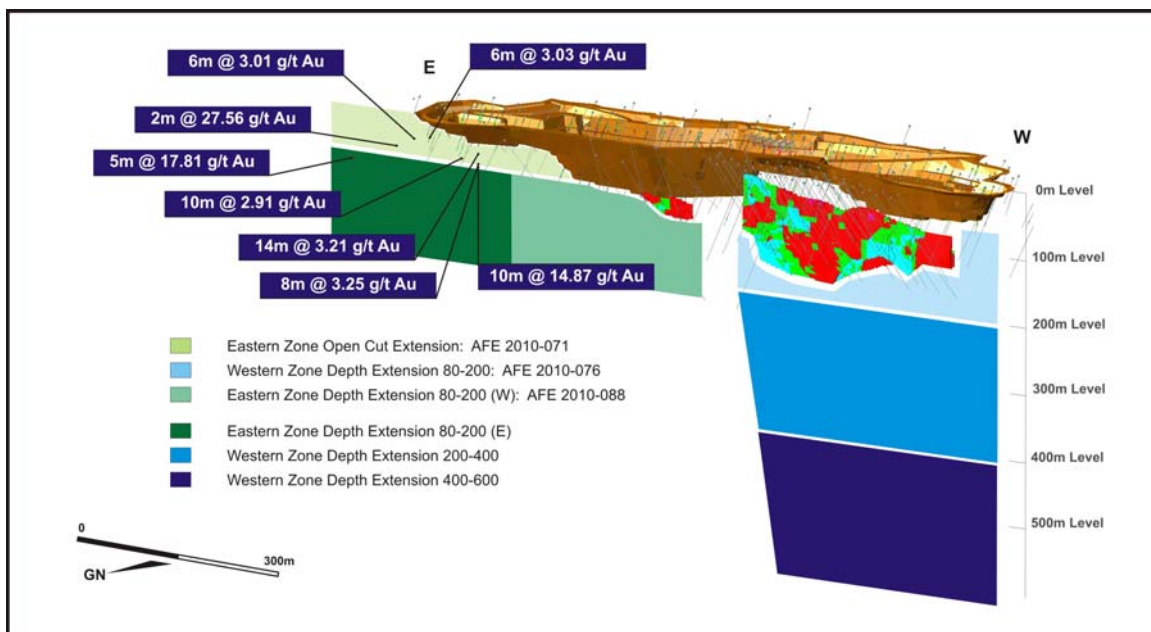
Dragon Mining Limited is pleased to announce the receipt of the final series of results from the Eastern Zone Open Cut Extension drilling campaign at the Svartliden Gold Mine, Sweden. This campaign forms part of an aggressive strategy, implemented with the objective to significantly increase the mine life.

This 32 hole, 4,524.6 metre campaign has returned a number of significant intercepts, including intercept highlights **10m @ 14.87 g/t gold, 2m @ 27.56 g/t gold, 14m @ 3.21 g/t gold, 8m @ 3.25 g/t gold, 10m @ 2.91 g/t gold, 6m @ 3.03 g/t gold** and **6m @ 3.01 g/t gold**. All results from this campaign are provided in Table 1, the recent results highlighted in blue.

The results from this campaign will be included in an update of the Svartliden Mineral Resource estimate, which is scheduled to be completed by the end of the September quarter.

Dragon’s Executive Chairman, Peter Cordin stated, “The results received to date have vindicated the decision to undertake the extensive drilling program at Svartliden targeting mineralisation amenable to both open-pit and underground mining. The Company’s confidence of extending the mine life at Svartliden continues to grow as results from drilling become available.”

Significant Drilling Intercepts in the Eastern Zone Open Cut Extension



Two diamond core drill rigs are now drilling the 25 hole, 4,645 metre Western Zone Depth Extension 80-200 campaign to further examine the western portion of the deposit below and adjacent to the existing underground Indicated (259,000t @ 7.2 g/t gold) and Inferred (53,000t @ 7.1 g/t gold) Resource. The first results from this campaign are expected in the coming weeks.

For and on behalf of
Dragon Mining Limited

Peter G Cordin
Executive Chairman

Table 1 – Results from Eastern Zone Open Cut Extension drilling campaign. Reported at a cut-off grade of 1.8g/t gold.

Hole	North	East	Azimuth (°)	Dip (°)	From (m)	Interval (m)	Gold (g/t)
Profile 2025							
SV10208	7187245	1588806	360	-54	No significant results		
SV10209	7187245	1588806	359	-45	No significant results		
Profile 2050							
SV10215	7187264	1588826	350	-57	No significant results		
SV10216	7187264	1588825	349	-50	123.0	1.0	2.88
					149.0	1.0	4.23
Profile 2100							
SV10213	7187292	1588840	359	-45	69.0	4.0	2.80
					92.0	7.0	2.40
					103.0	5.0	2.46
SV10214	7187291	1588840	355	-59	117.0	9.0	2.04
SV10274	7187282	1588873	340	-45	114.0	5.0	2.83
					127.0	1.0	3.72
SV10275	7187281	1588873	340	-55	140.0	8.0	2.63
Profile 2125							
SV10219	7187306	1588891	344	-45	72.0	6.0	2.88
					93.0	14.0	3.21
					including 2 metres @ 8.59 g/t gold from 101 metres		
SV10220	7187305	1588891	344	-55	114.0	8.0	3.25
					126.0	10.0	14.87
					including 5 metres @ 28.43 g/t gold from 131 metres		
Profile 2150							
SV10221	7187312	1588915	340	-50	108.0	10.0	2.91
					128.0	1.0	2.45
Profile 2175							
SV10222	7187348	1588929	339	-61	81.0	6.0	3.03
					91.0	4.0	2.48
					104.0	1.0	2.76
SV10223	7187291	1588949	340	-48	146.0	4.0	3.02
					155.0	2.0	5.10
					164.0	0.8	5.00
Profile 2200							
SV10224	7187331	1588962	341	-51	108.0	1.0	2.43
					112.0	6.0	3.01
SV10225	7187317	1588966	342	-49	127.0	1.0	2.20
					130.0	1.0	2.43
Profile 2225							
SV10226	7187388	1588957	354	-51	No significant results		
SV10227	7187351	1588981	341	-47	98.0	4.0	1.88
SV10228	7187340	1588985	342	-48	104.0	3.0	4.52
SV10229	7187310	1588995	339	-46	134.0	1.0	6.03
					140.0	1.0	2.90
					145.0	2.0	27.56
					including 1 metres @ 51.20 g/t gold from 146 metres		
Profile 2250							
SV10230	7187367	1589003	336	-52	100.0	1.0	2.77
SV10231	7187354	1589007	340	-50	97.0	1.0	9.81
					111.0	2.0	2.30
SV10232	7187321	1589018	341	-48	No significant results		
Profile 2275							
SV10233	7187318	1589045	340	-49	146.0	1.0	3.00
Profile 2300							
SV10234	7187373	1589053	336	-47	96.0	2.0	3.33
					104.0	1.0	2.04
SV10235	7187346	1589062	345	-45	121.0	1.0	8.04
SV10236	7187345	1589063	341	-48	No significant results		
Profile 2325							
SV10238	7187426	1589072	341	-42	No significant results		
SV10239	7187410	1589067	339	-49	76.0	4.0	3.61
SV10240	7187391	1589073	339	-49	90.0	1.0	19.75
SV10241	7187363	1589083	340	-49	112.0	2.0	6.51
SV10242	7187353	1589086	341	-47	121.0	1.0	6.44
Profile 2350							
SV10243	7187387	1589107	339	-52	98.0	1.0	4.55

Analysis of half core was completed at ALS Chemex Laboratories in Rosia Montana, Romania, using method Au-AA25, following sample preparation at the ALS Chemex facility in Pitea, Sweden.

The information in this report that relates to Exploration Results, Mineral Resources or Ore Reserves is based on information compiled by Mr Neale Edwards BSc (Hons), a Member of the Australian Institute of Geoscientists, who is a full time employee of the company and has sufficient experience which is relevant to the style of mineralization and type of deposit under consideration and to the activity which he is undertaking to qualify as a Competent Person as defined in the 2004 Edition of the Australasian Code of Reporting for Exploration Results, Mineral Resources and Ore Reserves. Mr Neale Edwards consents to the inclusion in the report of the matters based on his information in the form and context in which it appears.